



# Fire Rated Doors



R25075





## AN INTRODUCTION TO NAFFCO

NAFFCO was founded in Dubai, UAE to become the world's leading producer and supplier of life safety solutions. By recognizing the importance and convenience of having easy access to multiple safety services, we became specialized by offering complete solutions under one roof for all types of high quality firefighting equipment, fire protection systems, fire alarms, addressable emergency systems, security systems, custom-made vehicles such as fire trucks, ambulances, mobile hospitals and airport rescue firefighting vehicles (ARFF).

With the most talented and dedicated employees from around the world, NAFFCO has over 500 passionate engineers and over 4 million square feet of manufacturing facilities. We are currently exporting to over 100 countries worldwide.

Our products have been consistently certified by UL, FM, BSI, LPCB and Global Mark according to the latest International Quality Standard for their strict adherence to ISO 9001 quality management system and certified for ISO 14001 environmental management systems and BS OHSAS 18001 for occupational safety by UL DQS.

Our success is driven by our passion to protect; our vision is to become the world's number one provider of innovative solutions in protecting life, environment and property.





## Manufacturing

NAFFCO manufacturing department has the latest technology, state-of-the-art machines (CNC machines, hydraulic shearing and bending machines, all types of welding machines - MIG, TIG, ARC etc.), and a complete machine shop that enable us to meet the needs of any production requirement.

NAFFCO has the ability to introduce the latest technological systems & equipment in the fire safety field. Our engineers and technicians are well qualified & experienced in producing quality products.

The department is equipped with full-fledged testing facilities to test the equipment as per NFPA, EN, ICAO, KKK and Civil Defense standards & requirements, and to meet the customers specifications.

Considering the above facilities and excellence in engineering capabilities, NAFFCO can meet any challenges to produce bulk quantities of fire safety materials.



# FIRE RATED DOORS

NAFFCO has a dedicated state-of-the-art manufacturing facility for Fire Rated Doors. With one of the highest production capacities in the industry, NAFFCO is positioned as a leader in the door and hardware market.

NAFFCO's strength is in the reliability it can offer. With one of the highest numbers of sophisticated machinery and expert professionals, NAFFCO ensures compliance to its commitments and client requirements.

Our strict zero tolerance quality program guarantees client satisfaction in each and every delivered unit, making the NAFFCO brand synonymous with quality.

NAFFCO Fire Rated Doors are designed and manufactured in accordance with internationally recognized standards such as:

- NFPA 80
- SDI
- ANSI/UL 10B
- ANSI/UL 10C
- BS 476 Part 22
- CAN/ULC-S104
- NAMM HMMA
- AHJ
- NFPA 252



NAFFCO production line for fire doors are equipped with the most advanced CNC machinery.



# STEEL DOORS

## FIRE RATED DOORS

NAFFCO Steel Doors combine Fire Resistance with Door Functionality without compromising any aspect of both the requirements. These types of Doors reduce the Spread of Fire and enable Safe Egress, in-addition to offering highest degree of Compartmentalization. These types of Doors are highly preferred in all types of Buildings, nowadays, to offer Safe and Secure living and Egress. Our Technical Team is always available to offer advice and planning.

### SIZES

Custom Sizes available (Contact our Technical Team to know more about max. available Sizes for Fire Rated Door-sets)

### FIRE RATING

Up to 120 Minutes.

### VISION PANEL

Optional (Contact our Technical Team to know more about max. available Sizes for Fire Rated Vision Panels)

### LOUVERS

Optional (Contact our Technical Team to know more about max. available Sizes for Fire Rated Automatic Louver and the possibility of incorporating them)

### HANDING

As per Client's requirement.



## HONEY COMB CORE

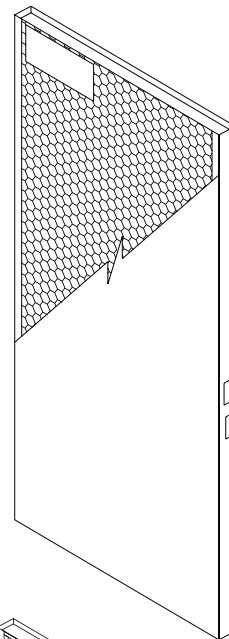
Kraft honey comb paper cores provides extreme rigidity and one of the highest flatness levels. This bonded to the face sheets with fire rated adhesive.

### RECOMMENDED USE

- Interior applications
- Residential applications
- Commercial applications
- Labour camps
- Warehouses
- Government buildings

### FINISHES

- Polyester Powder coated
- Epoxy powder coated
- Wood Finish
- Stainless steel



## STEEL STIFFENED CORE

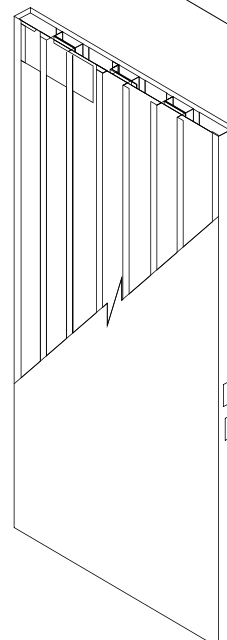
Steel Stiffened Doors provide highest durability, Insulation and Impact Resistance. The Door Leaves consist of Steel Hat Shaped Stiffeners that extend to the full height of the Door and Spot Welded to the Leaf face-sheets. The Void Spaces between the adjacent Stiffeners are filled with Mineral Wool Infill.

### RECOMMENDED USE

- High Impact Applications
- Frequent Use Applications
- Utility Buildings
- Commercial Towers
- Educational Institutions
- Health Care Buildings

### FINISHES

- Polyester Powder coated
- Epoxy powder coated
- Wood Finish



## GLAZED DOORS

Glazed Doors are suitable for any application where Aesthetical and Well Lit environment are required in addition to an environment where Vision of sight is demanded to the other side of a Room.

### SIZES

Custom Sizes available (Contact our Technical Team to know more about max. available Sizes for Fire Rated Door-sets)

### FIRE RATING

Up to 120 Minutes.

### HANDING

As per Client's requirement.

### APPLICATIONS

- Malls
- Libraries
- Schools
- Government Buildings
- Hospitals
- Corporate Locations

### FINISHES

- Polyester Powder Coated
- Epoxy Powder Coated
- Wood Finish
- Stainless Steel



## GLAZING OPTIONS

At NAFFCO, we have various glazing options available. NAFFCO is the only company in UAE to have an UL Listed Vision Panel that suits metal door.

### SIZES

Contact our Technical Team to know more about maximum available sizes for Fire Rated Vision Panels.

### FIRE RATING

Up to 120 Minutes.



GEORGIAN WIRED GLASS



CLEAR GLASS



TEMPERED GLASS

## STEEL DOORS WITH WOOD FINISH (Fire Rated/Non Fire Rated)

We offer a wide range of Wood Finishes that suits to various Customer needs.

### APPLICATIONS

- Malls
- Hotel
- Auditoriums
- Residential
- Lounges
- Other Commercial areas



## ACCESS PANEL (Fire Rated/Non Fire Rated)

NAFFCO has proven to be one of the top manufacturers of Access Panel in the Industry. These Access Panels are available in custom made sizes and designs. With NAFFCO Access Panels, Access to switch boards, pipes and valves within the walls, especially in corridors, can be easily hidden to provide a clean look. We do have a wide range of Fire rated, Non-Fire Rated, Recessed and Security type Access Panels.



## SLIDING DOORS

NAFFCO sliding doors demonstrate clever engineering, versatility and durability in applying the whole concept behind the sliding panels in utilizing the space that you have by creating more space easily. Unlike a set of folding doors for example where at least half of your available opening is blocked. Our sliding door system incorporates

the full opening without wasting any space. This is done by using modern technology and state-of-the-art hardware designed for easy functionality and long term reliability.

If you are looking for effortless, smooth gliding system, NAFFCO sliding doors are the best choice.

### OPTIONS

- Manually operated
- Electrically operated

### APPLICATIONS

- Warehouse
- Garage
- Store Rooms
- Entrance Doors
- Lounges



## ACOUSTIC DOOR & FRAME

NAFFCO Acoustic doors have been designed to prevent a certain amount of sound from passing through a door to the other side of the Door. Having been a mandatory requirement for loud environments such as manufacturing facilities and music studios, these Doors are also having increased requirements in office and business environments too.

### STC RATINGS

Up to 47 Db

### FINISHES

- Polyester Powder Coated
- Epoxy Powder Coated
- Wood Finish
- Stainless Steel
- Hard Textured-Special Finish

### APPLICATIONS

- Broadcasting and Recording Studios
- Language labs
- Cinemas and Theatres
- Plant/Machine/Motor Rooms
- Conference/Meeting/Function Rooms
- Auditoriums and Stadiums
- Garages





## BLAST PROOF DOORS

The blast proof door is designed to protect human life from any accidental explosion that may occur in petrochemical plants or in industrial manufacturing facilities; to offer disaster prevention and protection for main facilities; and, to effectively manage and control explosion in military experiments at military facilities or at any explosion-prone laboratories.

Doors rated up to 4 psi Ratings can be supplied.



## ROLLING SHUTTERS

Manually operated shutters are installed with the latest sophisticated springing systems. This ensures that even large shutters can be lifted with the minimum of effort. Electrically operated shutters provide effortless security. Large areas can be covered with just one shutter.

Group controls and relays can operate multiple installations at the same time. Fire rating is above 120 minutes (*Under UL Listing*), and 240 Minutes (*Under BS Listing*) can be met. Kindly contact our Technical team for more details.

### OPTIONS

- Manually operated
- Electrically operated
- High-speed

### APPLICATIONS

Warehouses and Industrial Facilities.



# NAFFCO FIRE CERTIFIED HARDWARE

NAFFCO carries a complete range of certified hardware catering to various design requirements. All hardware are available in multiple finish options.

## EXIT DEVICE

### VERTICAL FIRE EXIT DEVICE

- UL Listed
- Top and bottom latching
- Rods are high quality steel
- Rods can be adjusted to fit various door heights and widths.
- Non-handed
- Suited for double leaf doors
- Finishes
  - Stainless steel
  - Aluminium finish
  - Painted Aluminum Finish
- Available Sizes
  - 22" Doors
  - 36" Doors
  - 48" Doors

### HORIZONTAL FIRE EXIT DEVICE

- UL Listed
- Adjustable to door width requirements
- Non-Handed
- Suitable for single leaf doors
- Finishes
  - Stainless steel
  - Aluminium finish
  - Painted Aluminum Finish
- Available Sizes
  - 22" Doors
  - 36" Doors
  - 48" Doors

### CONCEALED FIRE / FIRE EXIT DEVICE

- Top and bottom connection
- Dogging features are available
- Adjustable to door width and height
- Non-handed
- Suited for single and double leaf doors.
- Finishes
  - Stainless steel
  - Aluminium finish
  - Painted Aluminum Finish
- Available Sizes
  - 22" Doors
  - 36" Doors
  - 48" Doors



# HINGES

## RELIABILITY

NAFFCO produces the highest quality of steel hinges meeting the most stringent requirements.

Hinge selection is based on the following factors:

- Door weight
- Usage frequency
- Door Dimension

Ball bearing hinges are mandatory requirements for all fire rated door openings.

## NUMBER OF HINGES

As per NFPA Standards Doors up to 1520mm requires two (2) hinges, above which every 760mm mandates 1 hinge.



# CLOSER

## FEATURES.

- UL Listed.
- Adjustable closing speeds
- Adjustable latching speeds
- Adjustable sweep speed.
- Back check function.
- Power / Spring Size Range - 1 to 5
- Handling can be easily adjustable on site feature allows the door to be opened to a specified degree without hitting the wall



# LOCKS

- NAFFCO provides both mortise and cylindrical lock sets
- Conforms to the highest quality standards.
- Available in various finishes.
- ANSI, BS and UL Certified options available.

## KEYING

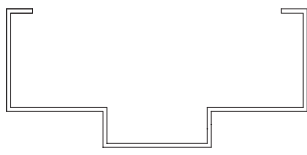
Master keying options are available for all NAFFCO lock cylinders.

## HAND

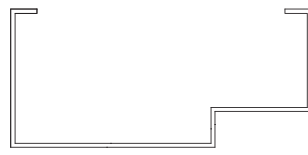
Non-Handed.



## STANDARD STEEL FRAME PROFILES



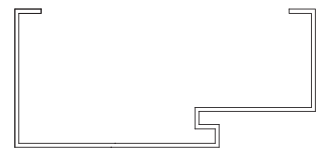
DOUBLE RABBET



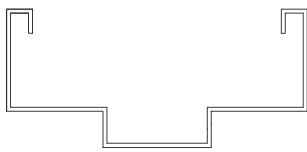
SINGLE RABBET



DOUBLE RABBET - KERF



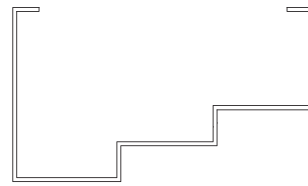
DOUBLE RABBET - KERF



DOUBLE RABBET WRAPAROUND



SINGLE RABBET WRAPAROUND

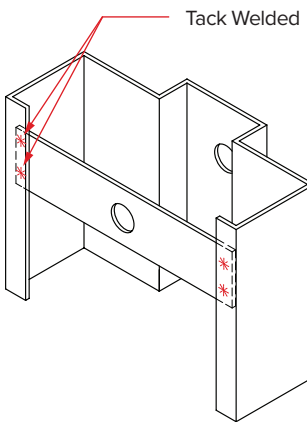


DOUBLE EGRESS

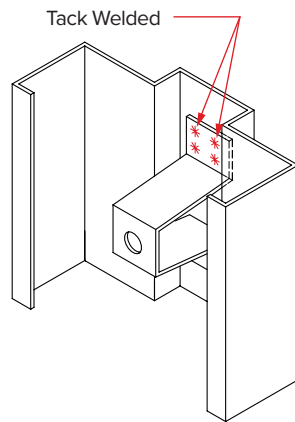


CASED OPENING

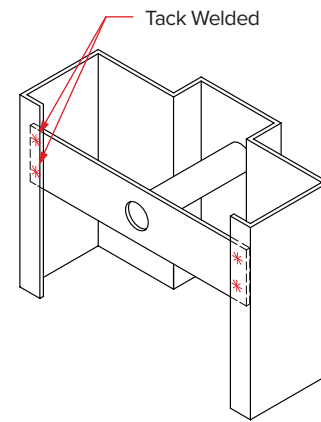
## STANDARD ANCHOR TYPES



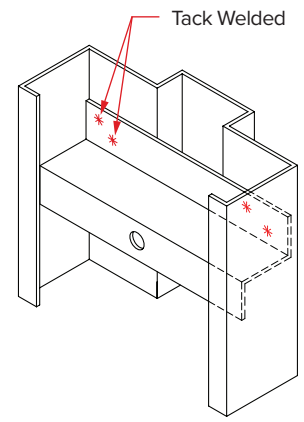
FLAT BAR ANCHOR



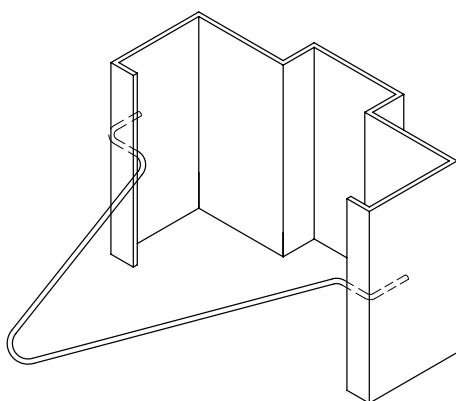
'U' ANCHOR



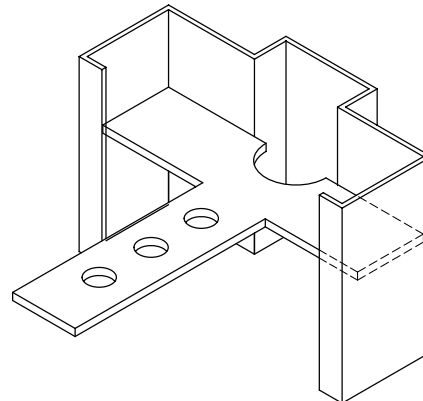
FLAT BAR WITH PIPE ANCHOR



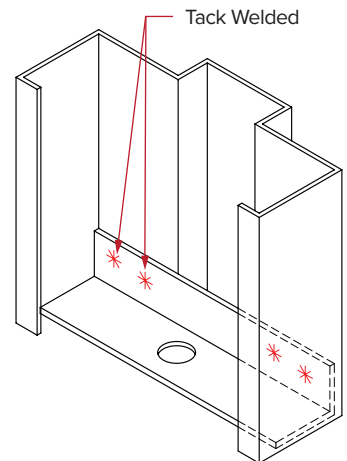
'Z' ANCHOR



WIRE ANCHOR



'T' ANCHOR



FLOOR ANCHOR

## CERTIFICATE OF COMPLIANCE

**Certificate Number** 20160720-R25075  
**Report Reference** R25075-20121231  
**Issue Date** 2016-JULY-20

**Issued to:** NATIONAL FIRE FIGHTING MFG FZ CO  
PO BOX 17014  
JEBEL ALI FREE ZONE  
DUBAI UNITED ARAB EMIRATES

**This is to certify that representative samples of** SWINGING-TYPE FIRE DOORS;  
SWINGING-TYPE FIRE DOORS, POSITIVE-PRESSURE TESTED

Model FALCON, a single and a pair of Swinging-type fire door assembly of the hollow metal type with Rockwool insulation, intended for 2h (where applicable), 1-1/2h, 1h and 3/4h locations for use in masonry constructions. Doors Classified in accordance with ANSI/UL 10C.

Have been investigated by UL in accordance with the Standard(s) indicated on this Certificate.

**Standard(s) for Safety:** ANSI/UL 10C, Positive Pressure Fire Tests of Door Assemblies

**Additional Information:** See the UL Online Certifications Directory at [www.ul.com/database](http://www.ul.com/database) for additional information

Only those products bearing the UL Certification Mark should be considered as being covered by UL's Certification and Follow-Up Service.

Look for the UL Certification Mark on the product.

*Barakat*

Shouq Mahmoud, Director North American Certification Program  
UL LLC

Any information and documentation involving UL Mark services are provided on behalf of UL LLC (UL) or any authorized licensee of UL. For questions, please contact a local UL Customer Service Representative at [www.ul.com/customer-service](http://www.ul.com/customer-service).



## CERTIFICATE OF COMPLIANCE

**Certificate Number** 20160720-R25075  
**Report Reference** R25075-20130830  
**Issue Date** 2016-JULY-20

**Issued to:** NATIONAL FIRE FIGHTING MFG FZ CO  
PO BOX 17014  
JEBEL ALI FREE ZONE  
DUBAI UNITED ARAB EMIRATES

**This is to certify that representative samples of** SWINGING-TYPE FIRE DOORS;  
SWINGING-TYPE FIRE DOORS, POSITIVE-PRESSURE TESTED

Model EAGLE, a single and a pair of Swinging-type fire door assembly of the hollow metal type with honeycomb construction, intended for 2h (where applicable), 1-1/2h, 1h and 3/4h locations for use in masonry constructions. Doors Classified in accordance with ANSI/UL 10C.

Have been investigated by UL in accordance with the Standard(s) indicated on this Certificate.

**Standard(s) for Safety:** ANSI/UL 10C, Positive Pressure Fire Tests of Door Assemblies

**Additional Information:** See the UL Online Certifications Directory at [www.ul.com/database](http://www.ul.com/database) for additional information

Only those products bearing the UL Certification Mark should be considered as being covered by UL's Certification and Follow-Up Service.

Look for the UL Certification Mark on the product.

*Barakat*

Shouq Mahmoud, Director North American Certification Program  
UL LLC

Any information and documentation involving UL Mark services are provided on behalf of UL LLC (UL) or any authorized licensee of UL. For questions, please contact a local UL Customer Service Representative at [www.ul.com/customer-service](http://www.ul.com/customer-service).



## CERTIFICATE OF COMPLIANCE

**Certificate Number** 20160222-R25075  
**Report Reference** R25075-20151229  
**Issue Date** 2016-FEBRUARY-22

**Issued to:** NATIONAL FIRE FIGHTING MFG FZ CO  
PO BOX 17014  
JEBEL ALI FREE ZONE  
DUBAI UNITED ARAB EMIRATES

**This is to certify that representative samples of** SWINGING-TYPE FIRE DOORS; SWINGING-TYPE FIRE DOORS, POSITIVE-PRESSURE TESTED

Model COOL-TRR 250 °F, pair of swinging-type fire door assembly of the composite type with temperature rated core material, rated up to and including 3 hr, 250 °F Temperature Rise Rating.

Have been investigated by UL in accordance with the Standard(s) indicated on this Certificate.

**Standard(s) for Safety:** ANSI/UL 10C, Positive Pressure of Fire Tests of Door Assemblies  
ANSI/UL 10B, Fire Tests of Door Assemblies

**Additional Information:** See the UL Online Certifications Directory at [www.ul.com/database](http://www.ul.com/database) for additional information

Only those products bearing the UL Certification Mark should be considered as being covered by UL's Certification and Follow-Up Service.

Look for the UL Certification Mark on the product.

*Barakat*

Shouq Mahmoud, Director North American Certification Program  
UL LLC

Any information and documentation involving UL Mark services are provided on behalf of UL LLC (UL) or any authorized licensee of UL. For questions, please contact a local UL Customer Service Representative at [www.ul.com/customer-service](http://www.ul.com/customer-service).



## CERTIFICATE OF COMPLIANCE

**Certificate Number** 20150821-R38488  
**Report Reference** R38488-20150818  
**Issue Date** 2015-AUGUST-21

**Issued to:** NATIONAL FIRE FIGHTING MFG FZ CO  
PO BOX 17014, JEBEL ALI FREE ZONE,  
DUBAI UNITED ARAB EMIRATES

**This is to certify that representative samples of** FIRE-PROTECTION-RATED GLAZING MATERIALS  
Ceramic type glass glazing material. The glass is clear, not tinted. Firelite, Firelite NT, FireLite Plus, FireLite IGU, WireLite and WireLite NT glazing material.

Have been investigated by UL in accordance with the Standard(s) indicated on this Certificate.

**Standard(s) for Safety:** UL 9 - Fire Tests of Window Assemblies  
UL 10B - Fire Tests of Door Assemblies  
UL 10C - Positive Pressure Fire Tests of Door Assemblies  
ULC/CAN4-S106 - Standard Method for Fire Tests of Window and Glass Block Assemblies  
ULC/CAN4-S104 - Standard Method for Fire Tests of Door Assemblies

**Additional Information:** See the UL Online Certifications Directory at [www.ul.com/database](http://www.ul.com/database) for additional information

Only those products bearing the UL Certification Mark should be considered as being covered by UL's Certification and Follow-Up Service.

Look for the UL Certification Mark on the product.

*Barakat*

Shouq Mahmoud, Director North American Certification Program  
UL LLC

Any information and documentation involving UL Mark services are provided on behalf of UL LLC (UL) or any authorized licensee of UL. For questions, please contact a local UL Customer Service Representative at [www.ul.com/customer-service](http://www.ul.com/customer-service).





## CERTIFICATE OF REGISTRATION

This is to certify that

**National Fire Fighting Manufacturing FZCO (NAFFCO)**

P.O.Box 17014  
JEBEL ALI FREE ZONE  
DUBAI  
United Arab Emirates

Meets the requirements of the Exova BM TRADA Q-Mark International Fire Door Manufacture scheme to **STD 096 - Issue 2 - 09/02/2015** which only operates in Bahrain, Egypt, Iraq, Jordan, Kuwait, Lebanon, Libya, Oman, Qatar, Saudi Arabia and The United Arab Emirates for the products on the attached schedule

**Tom Johnston**  
General Manager  
Central Certification Services

Exova UK Ltd, (T/A Exova BM TRADA), Chiltern House, Jacking Lane, High Wycombe, Buckinghamshire, HP14 4QS, UK  
Registered Office: Exova (UK) Ltd, Lochend Industrial Estate, Newbridge, Midlothian EH26 8PL, United Kingdom, Reg No. SC029429.  
This certificate remains the property of Exova (UK) Ltd. This certificate and all copies or reproductions of the certificate shall be returned to Exova (UK) Ltd or destroyed if requested. Further certification regarding the scope of the certificate and verification of the certificate is available through Exova BM TRADA or at the above address or at [www.exovabmtrada.com](http://www.exovabmtrada.com)  
The use of the UKAS accreditation mark indicates accreditation in respect of those activities covered by the accreditation certification 012  
Multiple clients - The scope of certification shown above includes the participating sites shown on the registration schedule  
Page 1 of 2

Certificate Number  
307  
Date of Initial Certification  
13 January 2015  
Date of last issue  
24 June 2016  
Date of Expiry  
12 January 2018



### Registration Schedule

<b>Establishment</b>	<b>Address</b>
National Fire Fighting Manufacturing FZCO (NAFFCO)	P.O.Box 17014 JEBEL ALI FREE ZONE DUBAI United Arab Emirates

### Scope

Assessment/ Test Report	Doorset Description	Rating	Test Type
TBW/IMK16	NAFFCO - SDD - 180	180 min	BS 476 Part 22
TBW/IMJ58	NAFFCO - SDDFG - 240	240 min	BS 476 Part 22
Chill/A12187 (Chill/IF12019)	NAFFCO - AP - 240	240 min	BS 476 Part 22
TBW/O1019-1	NAFFCO-Falcon-180	180 min	BS 476 Part 22
TBW/IC/ O1019-3	NAFFCO-Falcon & Eagle- 240	240 min	BS 476 Part 22
TBW/IC/P1026	NAFFCO-Cool TRR- 450"	120 min	BS 476 Part 22
TBW/IC/P1032	NAFFCO-Eagle- 120	120 min	BS 476 Part 22
TBW/IC/QA003	NAFFCO-LSADLS-240 (With Vision Panels)	240 min	BS 476 Part 22
BMT/CNA/F14284	NAFFCO-LSADD-120	120 min	BS 476 Part 22
	NAFFCO-LSADD-180	180 min	
	NAFFCO-LSASD-240	240 min	
BMT/CNA/F15251	NAFFCO-LSASD- 180 (with / without overpanel)	180 min	BS 476 Part 22
	NAFFCO-LSASD- 240 (with / without overpanel)	240 min	
	NAFFCO-LSADD- 120 (with / without overpanel)	120 min	
BMT/CNA/F15251	NAFFCO-LSADD- 180 (with / without overpanel)	180 min	BS 476 Part 22
	NAFFCO-LSADD- 240 (with / without overpanel)	240 min	

This certification is awarded to the company named above and is not transferable

Page 2 of 2

# CERTIFICATE OF MEMBERSHIP 2015-2016

## NAFFCO

is a member in good standing and is entitled to the benefits and privileges of membership.

**Robert D. Maas**  
DHI President

**Gerald S. Heppes, Sr. CAE**  
Chief Executive Officer





Serving Over 100 Countries Worldwide

**NAFFCO**

Email: [info@naffco.com](mailto:info@naffco.com)  
[www.naffco.com](http://www.naffco.com)

In line with NAFFCO policy for continuous product development,  
NAFFCO has the right to change specifications without prior notice.